



WATER WARDEN

The Water Warden is a smart water conservation device designed for toilets. It automatically controls water flow, activating only when a user is present and shutting off after use, significantly reducing water waste and preventing excessive water bills. Ideal for residential and commercial buildings, the Water Warden is perfect for aging and existing infrastructures prone to leaks and inefficiency. Easy to install without the need for a plumber, the Water Warden offers a hassle-free and cost-effective solution for efficient water management.

KEY FEATURES

- ✓ **Automatic Water Control:** Installs inline with the toilet supply, activates with user detection, and shuts off after use.
- ✓ **User Detection:** Non-invasive PIR sensor enhances water efficiency.
- ✓ **Leak Detection:** Sensor identifies leaks, with an audible alarm to alert users.
- ✓ **Easy Installation:** No professional plumbing needed; basic plumbing skills recommended.
- ✓ **Brass Construction:** Durable all-metal valve withstands high pressure and temperature fluctuations.
- ✓ **User Input:** Override button to silence alarm and control water flow manually.



WATER WARDEN

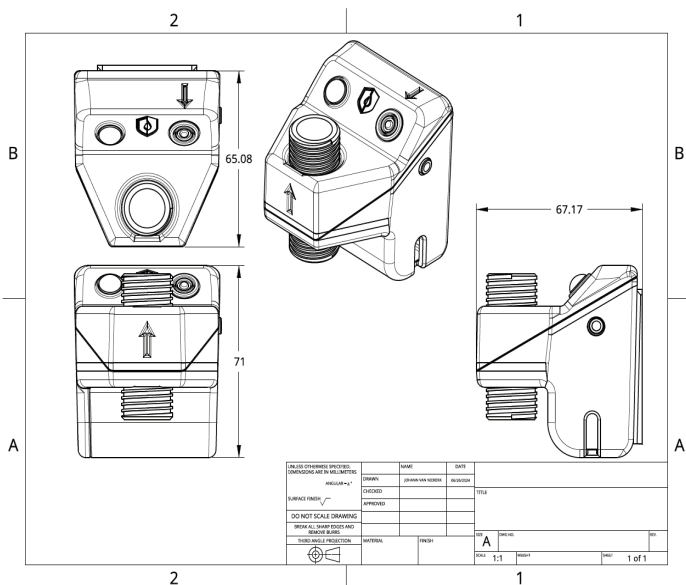
TECHNICAL SPECIFICATIONS

SPECIFICATIONS

| | |
|-------------------------|---|
| Sensor Type: | Passive Infrared (PIR) sensor for user detection |
| Leak Detection: | Capacitive moisture sensor |
| Alarm Type: | Audible alarm for leak alerts |
| Installation Req: | Fits standard toilet supply lines; no specialized tools required |
| Power Supply: | Battery operated. Li-SOCI 3.6V 9600mAh Primary cell (To be sourced from CS) |
| Life expectancy: | (Usage depended) |
| Max Operating pressure: | 65psi |
| Alarm: | +92dBm Audible alarm. |
| Environmental Rating: | IP54 |

PHYSICAL CHARACTERISTICS

| | |
|-------------|--------------------------|
| Material: | Durable, water-resistant |
| Dimensions: | (60x70x70mm) |
| Weight: | (250g) |



FLOOD ADAPTER



Specifications:

- Removable
- 1300mm Length
- ASA Plastic

INSTALLATION NOTES

- ✓ No plumber required for installation.
- ✓ Wall mounting is recommended.
- ✓ Users should have a basic understanding of their plumbing system before attempting installation.

